

Table of Contents

- | [Property Details](#)
- | [Floorplan](#)
- | [Property Video](#)
- | [Property Inclusions](#)
- | [Comparable Sales](#)
- | [Relevant Documents](#)
- | [About Rutherford](#)
- | [About Us](#)
- | [Disclaimer](#)

Property Details



11 Easton Close, RUTHERFORD

Live On The High Side

4  2  2  **\$740,000**

Ducted Cooling

Floor boards

Outdoor Entertaining

Shed

Fully Fenced

Built In Robes

Perched on the elevated side of Easton Close, Rutherford, this recently renovated four-bedroom home stands out at the pinnacle of tranquillity. Nestled at the end of a peaceful cul-de-sac, the property boasts a quiet and secluded ambiance, offering surprising proximity to essential amenities such as transportation, local shops, and schools.

The bedrooms within this residence are generously sized, each equipped with built-in wardrobes, elegant bamboo flooring, and convenient roller shutters. The master bedroom takes luxury to the next level with a walk-in wardrobe, an ensuite, and indulgent heated lighting. A tastefully updated bathroom, featuring a fresh white and grey colour palette, serves the remaining three bedrooms, offering both a bathtub and a separate shower recess with a glass screen.

The heart of the home is a custom-designed kitchen adorned with stone benchtops, a tiled splashback, and top-of-the-line Bosch inducted cooktop and stainless-steel appliances, including an electric oven, rangehood, and double sink. Floor-to-ceiling cupboards provide ample storage, complemented by the convenience of ducted air conditioning throughout the home for climate control.

Adjacent to the kitchen, the dining room opens onto a covered outdoor entertaining space and a backyard facing southeast, capturing the enchanting morning light—an ideal spot for sipping

on your morning tea or coffee. The property also features a family-favourite fruit and vegetable patch tucked away in the corner of the garden, boasting citrus trees yielding mandarins, limes, oranges, and chillies.

A rear shed, easily accessible for stress-free use, presents opportunities for a versatile space, be it a man cave or potential home occupation (subject to approval), such as a hair salon or handyman workshop.

This home requires no additional effort, making it an ideal choice for those seeking a hassle-free living experience.

To explore this property first hand, call Patrick Howard and Aiden Procopis at 0408 270 313 or 0456 664 481 for more information or to schedule your onsite inspection.

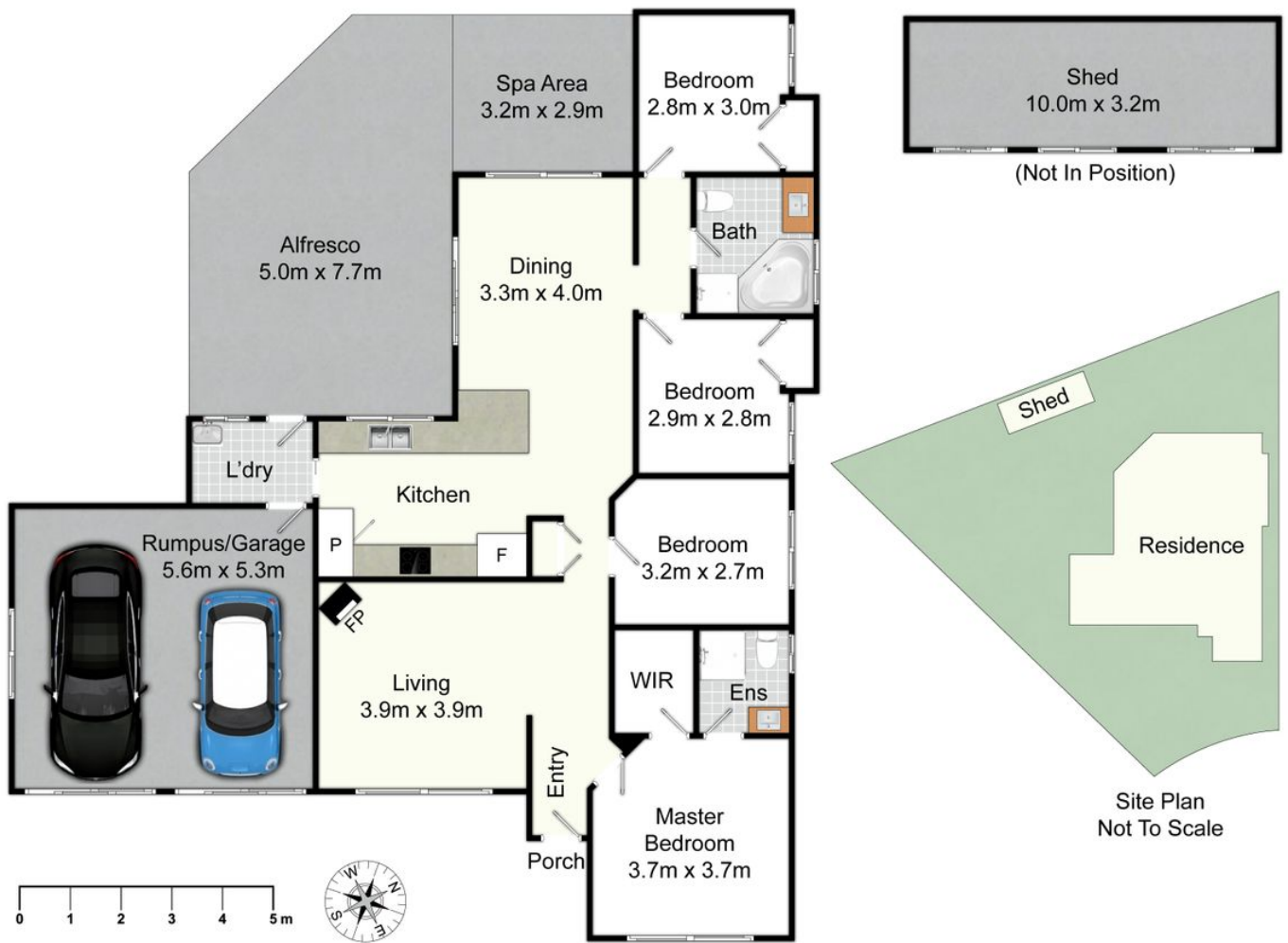
"First National Maitland, We Put You First."

Disclaimer: While we gather information from sources we consider reliable, we cannot guarantee its accuracy. Interested parties are encouraged to conduct their own inquiries.

Next Open Home:



Floorplan



11 Easton Cl, Rutherford

All information contained herein is gathered from sources we deem reliable. However, we cannot guarantee its accuracy and act as a messenger only in passing on the details. Interested parties should rely on their own inquiries and the contract for sale. The floor plans are artist's impressions only. The site plan is not to scale.



Property Video

Property Inclusions

Living Areas

LOUNGE ROOM

Bamboo floating flooring

Combustion wood burning fire

Ducted AC

Privacy curtains and drapes

Blue painted walls

Built-in cupboard

LIVING | DINING

Bamboo floating floors

Ducted AC

Blue painted walls

Glass sliding door

Diamond grill sliding screen door

External awning on window

Bedrooms

MASTER BEDROOM

Walk in wardrobe

2x double power points

Ducted air con outlet

Ceiling fan

S. system

En-suite

Sink

W.C

Shower

Heated light

Lounge room

Lights

2x double power points

Antenna

Light switch

SECOND BEDROOM

Ceiling fan

Ducted air conditioning outflow

Bamboo flooring

Light blue walls

White ceiling's

THIRD BEDROOM

Bamboo flooring

Light blue walls

Built-in wardrobe's

Ceiling fan

Ducted air conditioning out flow

Double power point

FOURTH BEDROOM

Bamboo flooring

Light blue walls

Built-in wardrobe's

Ceiling fan

Ducted air conditioning out flow

Double power point

Outside / external

Cubby house

Clothesline

Sandstone retained garden

Insulated undercover alfresco area

Citrus trees – mandarin, limes, oranges

Water tank

Wet Areas

BATHROOM

Sink

Toilet

Bath and shower

Black tiling with white grout on floor

White tiling on walls

Heating light with fan

LAUNDRY

Black tiles with white grout floors

White tiles on walls

Laundry sink

Washing machine taps

Double power point

Kitchen and dining

Bosch Induction cooktop

Stainless steel appliances

Stone bench top

Tiled splashback

Double sink

8x double p/p

Ex. fan

Down lighting

Bamboo flooring

Antenna

External

FRONT

Stenciled, coloured driveway

Elevated position

Double garage doors with glass and screen doors for adaptability

Rear vehicle access

Front porch

ornate security screen door

REAR

Large undercover area with concrete flooring

Fully fenced

Retaining walls

Water tank

Fluro lighting

Enclosed pet area

Cubby house

Large shed

Lawn area

GARAGE

Two roller doors

Two ceiling fans

Glass sliding door

Screen roller doors

Man hole

Internal access

SHED

S. system

Fan

2x work bench

24 power points

Glass screen door

Crimsafe door

Comparable Sales



53 CLAYTON CRES RUTHERFORD NSW 2320

4 Bed | 2 Bath | 2 Car
\$795,000
Sold ons: 18/12/2023

 Peters



41 BRIGANTINE ST RUTHERFORD NSW 2320

4 Bed | 2 Bath | 2 Car
\$710,000
Sold ons: 25/01/2024

CLARKE & CO



13 GARWOOD ST RUTHERFORD NSW 2320

4 Bed | 2 Bath | 2 Car
\$725,000
Sold ons: 22/01/2024



49 GRAND PDE RUTHERFORD NSW 2320

4 Bed | 2 Bath | 3 Car
\$740,000
Sold ons: 25/10/2023

Thompson
Clarke



38 BRIGANTINE ST RUTHERFORD NSW 2320

4 Bed | 2 Bath | 2 Car
\$730,000
Sold ons: 17/11/2023



20 RANGER CL RUTHERFORD NSW 2320

4 Bed | 2 Bath | 3 Car

\$760,000

Sold ons: 05/10/2023



22 RESERVE ST RUTHERFORD NSW 2320

4 Bed | 2 Bath | 2 Car

\$795,000

Sold ons: 29/12/2023



12 MASTERS ST RUTHERFORD NSW 2320

4 Bed | 2 Bath | 2 Car

\$760,000

Sold ons: 02/11/2023



9 QUINTON CLOSE, RUTHERFORD

4 Bed | 2 Bath | 4 Car

\$780,000

Relevant Documents

[Marketing Contract](#)

[Make An Offer Form](#)

[RENTAL LETTER](#)

[RENTAL PRICING CMA REPORT](#)

About Rutherford

The beating heart of West Maitland, Rutherford is positioned on the western side of the Maitland CBD and is home to a range of bustling cafes and boasts a dynamic shopping village. With the second highest population in the Local Government Area, the suburb offers a range of schooling options from the local public primary school to the newly refurbished Rutherford Technology High School as well as St Pauls Catholic Primary School.

Rutherford has always been popular with purchasers and some of the reasons from buyers are:

- Easy access to the Maitland CBD
- Larger homes and block sizes in the area
- Ease of access to the Hunter Valley and the mining areas
- Family friendly areas with plenty of park space

We acknowledge the Traditional Custodians of Country throughout Australia and pay respects to their elders past, present and emerging. The suburb of Rutherford falls on the traditional lands of the Mindaribba people.

[Rutherford Suburb Profile](#)

Schools

- Rutherford Primary School
- Rutherford Technology High School School
- St Paul's Catholic Primary School
- All Saints Catholic Collage Maitland
- Saint Joseph's Catholic High School Lochinvar
- Hunter Valley Grammar School

Cafes and Restaurants

- Cuppa Joe Cafe
- Addil Indian & Kebab Restaurant
- The Bradford Hotel
- Bliss Coffee
- Breezes Cafe
- The Rutherford Hotel

Shopping

- McKeachie Shopping Complex
- Rutherford Shopping Complex
- Rutherford Super Center

About Us

Disclaimer

First National Real Estate Maitland declare that all information contained herein is gathered from sources we deem to be reliable. However, we cannot guarantee its accuracy and interested persons should rely on their own inquiries.

All images in this e-book are the property of First National Real Estate Maitland. Photographs of the home are taken at the specified sales address and are presented with minimal retouching. No elements within the images have been added or removed.

Plans provided are a guide only and those interested should undertake their own inquiry.